

Lithuania

First-of-its-kind E2E app-based satellite tolling solution

In February 2026, Kapsch TrafficCom was awarded to deliver and operate an end-to-end truck tolling system for Via Lietuva, the roadway institution of Lithuania. This is the world's first public tender to replace time based vignettes with distance based tolling via smartphone app and bring your own device.

As part of the project, Kapsch TrafficCom will deliver a satellite-based solution with which drivers and fleets can register, manage accounts, and handle GNSS based tolling effortlessly through one intuitive, end to end solution powered by proven Kapsch technology.

The system is based on satellite technology by Kapsch TrafficCom, which matches the location data sent by smartphones with a map of the Lithuanian road network, calculates accurate road tolls, and sends them back to the Kapsch-developed app which handles the payment process. All data is stored and processed on-premise in Lithuanian government-owned data centres, giving the authority full control over the toll information.

Kapsch TrafficCom is proud to be a partner to Via Lietuva in the delivery of a solution-as-a-service model (SaaS) which allows more flexibility and independence instead of expensive infrastructure-based tolling schemes.

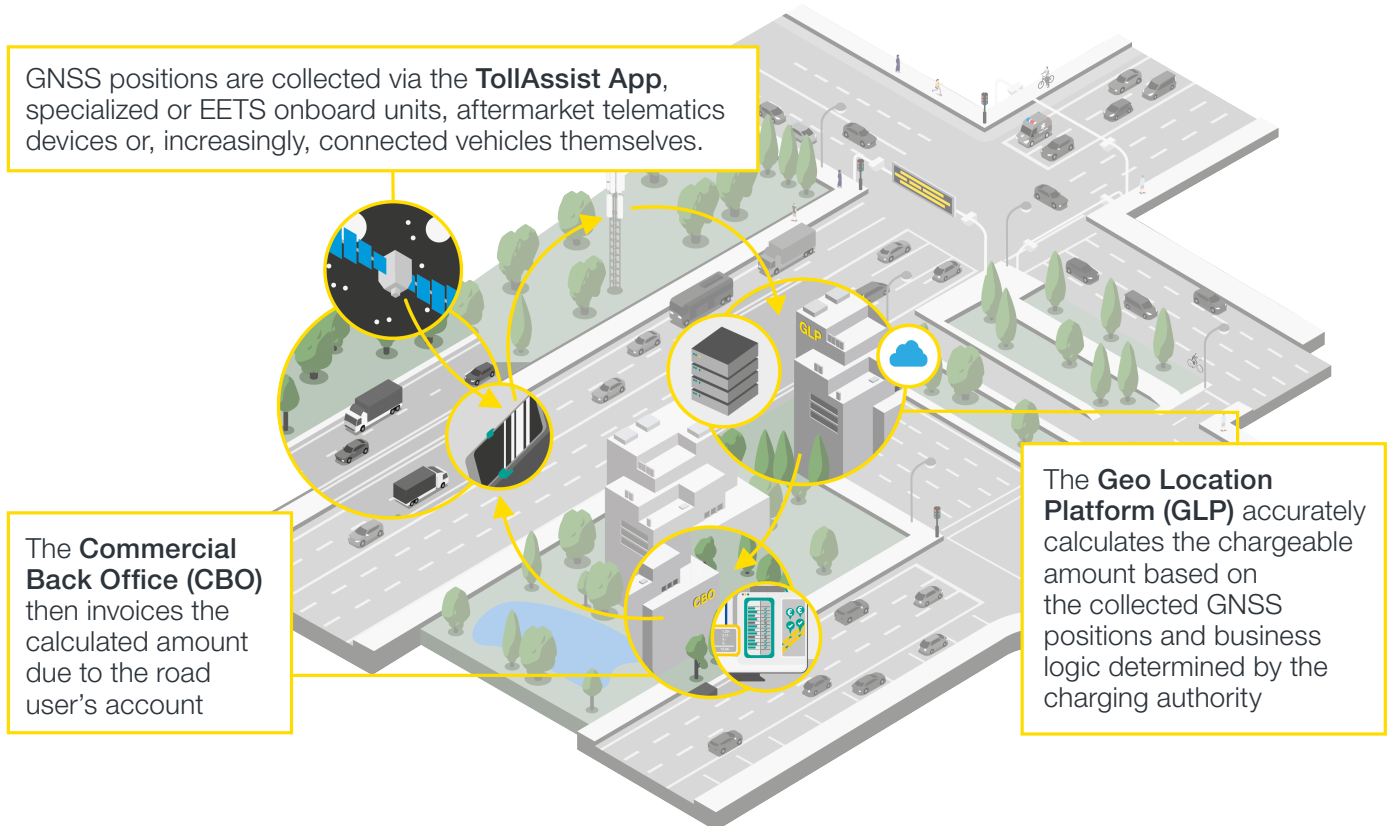


Project scope:

- Nationwide satellite toll collection system to be deployed at 19 national highways and 21 regional roads in total length of 2.851km
 - New distance based GNSS system procured in form of SaaS to replace an existing time based electronic vignette system collecting toll from the buses and heavy goods vehicles over 3,5t
 - Satellite based system to calculate toll based on driven distance, vehicle category (commercial M1-M2, N1-N3) and electric vehicles, carbon dioxide (CO2) emissions, EURO emission classification (0-6) and number of axles (2-5)
 - By Kapsch delivered system will integrate use of smartphones, manual toll declaration based on purchase of the route pass and Fleet Management Service with European Electronic Toll Service (EETS) providers into one user centric solution
- Main components of the Kapsch solution for the Lithuanian toll collection system are:
 - Toll Assist Smartphone/tablet tolling application (Android, iOS)
 - Geo Location Platform to process and rate positioning data provided by Toll Service Providers
 - Commercial backoffice
 - User centric CRM application, where user has in his hands a complete control and management over his toll account



How does it work in detail



We are happy to connect
Scan to get in contact with us

